

# Batch Controller



## IND780batch

Automatic or Manual Control

PC-Based Configuration

Track and Trace Functionality

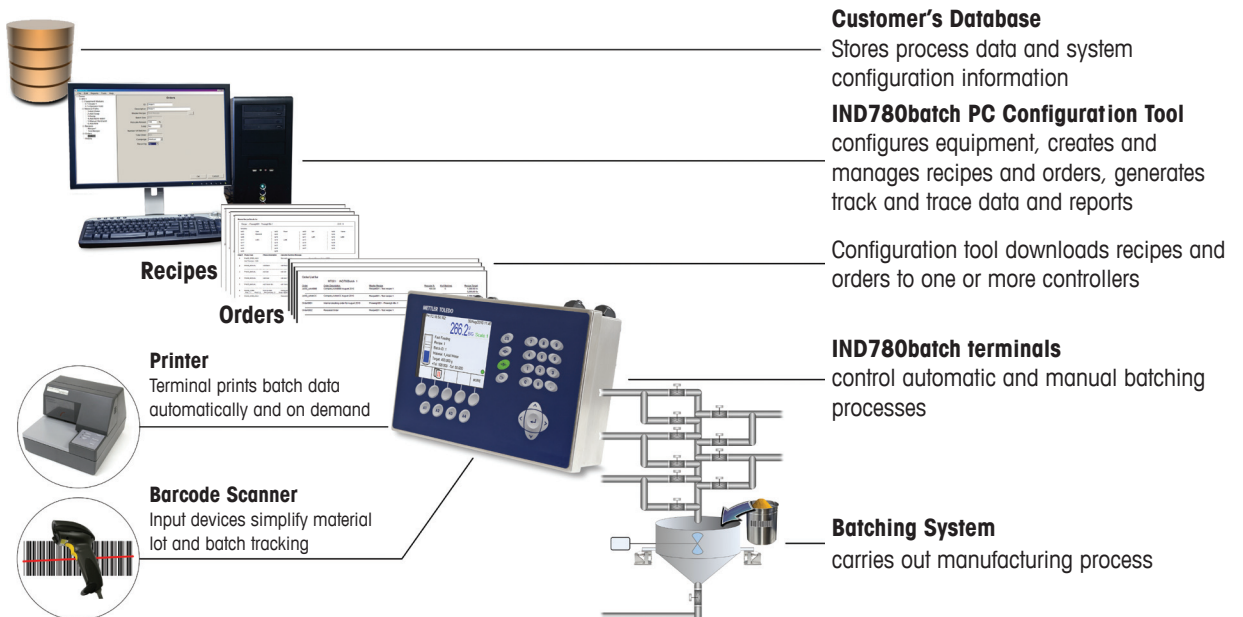


**Fully-Integrated Batch Controller**  
for Rugged Industrial Environments

**METTLER TOLEDO**

# Complete Operator Control Via Efficient User Interface

- Tracking and traceability of material, lot and batch
- Manual and fully-automatic batching
- Eliminates rework caused by incorrect or mis-weighed materials
- Use lot number to find a bad lots or recall batches at the touch of a button
- Assured conformity to food safety regulations



The system features unmatched flexibility, with advanced batching control technology that adheres to the ISA SP-88 Batch standard.

- Works as a stand-alone terminal for single or multi-scale applications.
- Optimizes your Batch process with consistent, accurate material transfers
- Minimizes material waste, improves batch quality and yields increased profits
- Meets legal metrology and safety standards in most world markets; multi-lingual firmware adaptable to local requirements
- Features intelligent recovery from power loss to prevent waste of valuable material
- Has print capability for end-of-batch summary and custom print messages

## Markets

- Food & Beverage
- Glass
- Chemical
- Pharmaceutical
- Aggregates
- Plastics
- Others

## Measurement Devices

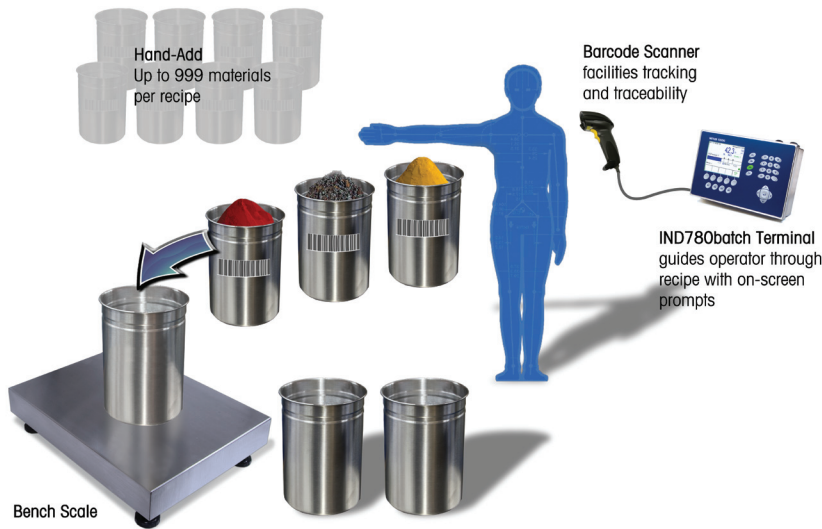
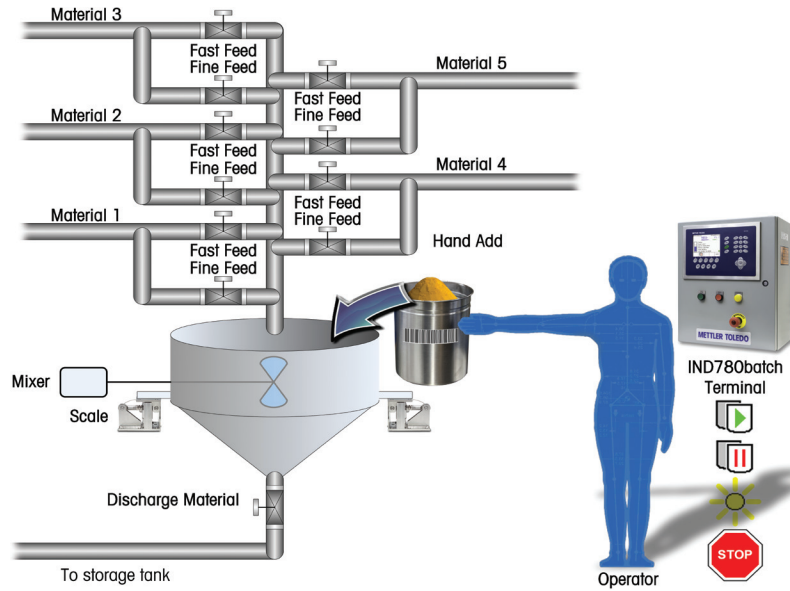
- Scales and Load Cell Systems

## Raw Materials

- Granules
- Powders
- Liquids
- Slurries

## Automatic control with hand-add flexibility

A typical IND780batch installation combines multiple material paths, including automatic feeds and hand-additions. The IND780 terminal's integrated I/O capabilities make configuration and operation of the batching process intuitive and error-free.



**Error-free manual batching**  
with simplified material traceability using keypad or barcode input of data

## Multi-Material Automatic Batching Control

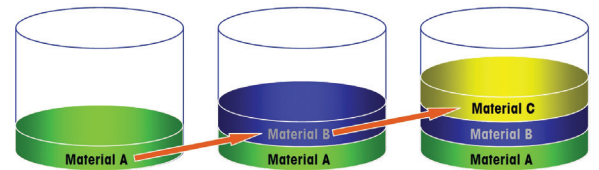
Handle up to 28 automatic materials with recipe-specific control, including conditional control tasks, go-to commands, recipe re-scaling, timing functions, and control of discrete inputs and outputs to allow the controller to interact with other equipment in the process.

## Manual Material Formulation

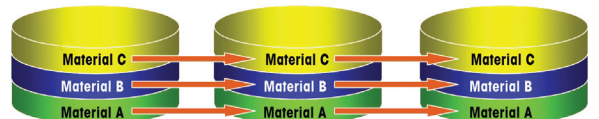
Lead your operators through your formulation recipes and eliminate variables that can cost your company money. Take control of your manual process with dependable recipe management and the ability to handle 999 materials. Tolerance checking, material bar-coding, and operator prompting all help to ensure the operator is guided through each batch.

## Vertical or Horizontal Batching Operations

IND780batch can manage both vertical and horizontal batch operations, for powerful "out of box" solutions.



In a **vertical batch operation**, each material is added in sequence as prescribed by the recipe



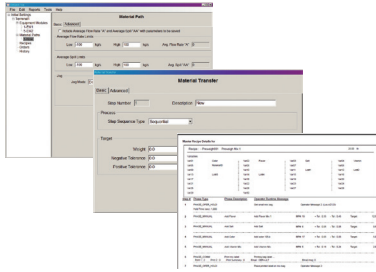
In a **horizontal batch operation**, the first material is added to each of multiple containers before the recipe continues to the second

## Manage it all with the BatchTool 780 PC-based utility

Manage your recipes, orders, batch history, printing and track and trace needs with the BatchTool 780 PC tool. Multiple batch terminals can be networked to a single PC, via EtherNet TCP/IP. Create, edit, and refine your recipes.

Create production orders and download them to the IND780batch terminal, where the operator can view an Order List and make a selection to initiate production.

- Straightforward configuration for complex operations



- Comprehensive reports on all aspects of the batching setup and process



### IND780batch Terminal

This powerful terminal is equipped with an easy-to-read color screen, and is available in enclosures for harsh environments and for panel-mounting.

A pre-engineered Packaged IND780batch solution is also available, in a painted steel enclosure certified to Type 4/12 protection. This packaged solution features integral I/O, including:

- Start/Resume button
- Pause/Abort button
- Emergency Stop button
- Alarm/attention indicator light

### Q.iMPACT® Advanced Material Transfer Control



METTLER TOLEDO has incorporated our advanced Q.iMPACT™ Material Transfer Control Algorithms as an option in IND780batch. Q.iMPACT moves your process to the next level of performance, featuring high speed material transfer with an accuracy unmatched in the industry.

[www.mt.com/IND780batch](http://www.mt.com/IND780batch)

For more information

**Mettler-Toledo, Inc.**  
1900 Polaris Parkway  
Columbus, Ohio 43240  
TEL. (800) 523-5123  
(614) 438-4511  
FAX: (614) 438-4900

**Schweiz**  
**Mettler-Toledo (Schweiz) GmbH**  
Im Langacher  
CH-8606 Greifensee  
Tel. +41 (0) 44 944 45 45

INO3521.E.00  
Subject to technical changes  
©06/2011 Mettler-Toledo, Inc.