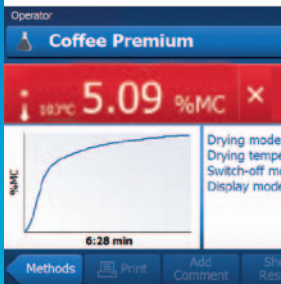


## Boost Productivity In Lab and Factory



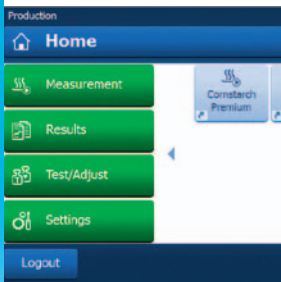
### Fast and accurate

The 2nd generation halogen technology features precise temperature control for rapid and homogenous heating of the sample, ensuring fast measurements and reproducible results.



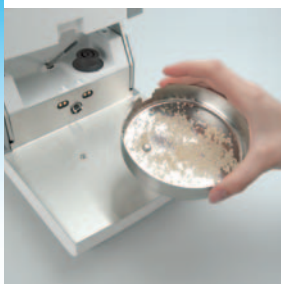
### Easy result tracking

Real-time drying curves visualize the measurement progress. Individual control limits simplify Pass/Fail decisions, automatic control charts trend the moisture content.



### Simple operations

The One Click™ interface sets new standard in safe, error-free operations. The home screen shows only the information required for daily routine work, shortcuts start methods with one click.



### Clean in 30 seconds

The surface underneath the sample pan is flat and sealed, ideal for fast and easy cleaning. The weighing cell is fully protected against spilled samples.



## Halogen Moisture Analyzer HS153

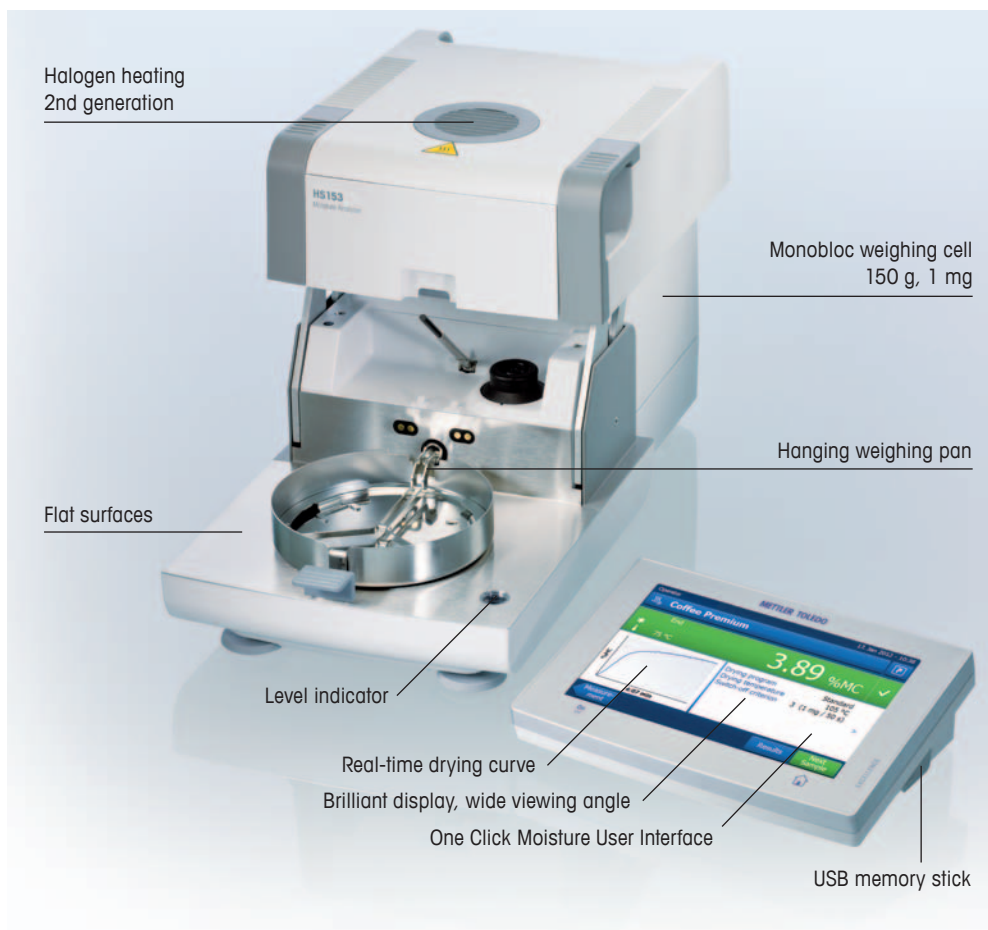
When moisture content determines productivity, the HS153 is the instrument of choice. High speed testing and powerful real-time graphics combined with ruggedness and ease-of-use ensure fast and reproducible measurements in the lab and on the factory floor.

With the HS153 you get:

- Fast results
- Full visualization
- Easy cleaning and long service life
- Error-free operations

# Moisture Analyzer HS153

## Key design elements



## Technical data

### Moisture content

Readability	0.01%
Repeatability (sd) with 2 g sample	0.05%
Repeatability (sd) with 10 g sample	0.01%
<b>Display modes</b>	% MC, % DC, % ATRO MC, % ATRO DC, g, g/kg MC, g/kg DC

### Balance

Technology	Monobloc
Capacity	150 g
Minimal sample weight	0.1 g
Readability	1 mg

### Drying unit

Technology	Halogen
Temperature range	40 - 230°C
Lid-opening	Manual

### Routine tests

Balance test external weights	Sensitivity at free weight, 100 g default
Balance test internal weights	No
Heating module test	2-point temperature calibration at 100/160°C

### Instrument adjustment

Heating module adjustment	2-point temperature adjustment at 100/160°C
Balance adjustment, external	Sensitivity at free weight, 100 g default
Balance adjustment, internal	No

### Method management

Method memory	99
Drying programs	Standard, gentle, fast
Switch-off	Automatic (5), timed, free (mg/s, %/s)
Sample identifications	10
Test function	Yes

### Result handling

Control chart	Yes
Drying curves	Yes

### Quality management

Pass/Fail statement	Yes
Level control	Level indicator

### User management

Groups	10
Users	30

### Connectivity

Connectivity	USB Host (2), RS232C, Memory Card slot SD/SDHC
--------------	--

**GWP®**  
Good Weighing Practice™  
[www.mt.com/GWP](http://www.mt.com/GWP)



### Mettler-Toledo AG

Laboratory & Weighing Technologies  
CH-8606 Greifensee, Switzerland  
Tel. +41 44 944 22 11  
Fax +41 44 944 30 60

Subject to technical changes  
© 05/2012 Mettler-Toledo AG  
Printed in Switzerland 30019626  
Global MarCom Switzerland

[www.mt.com/hxhs](http://www.mt.com/hxhs)

For more information